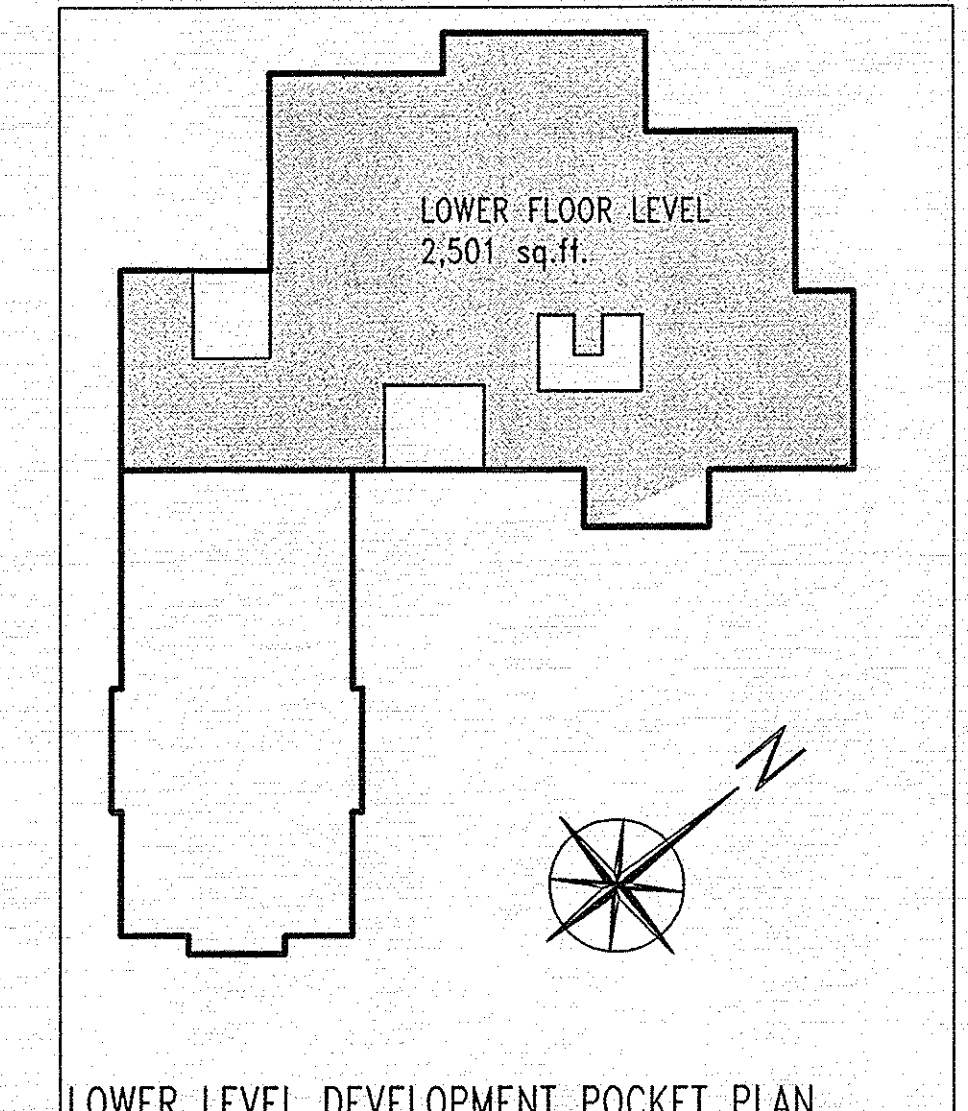
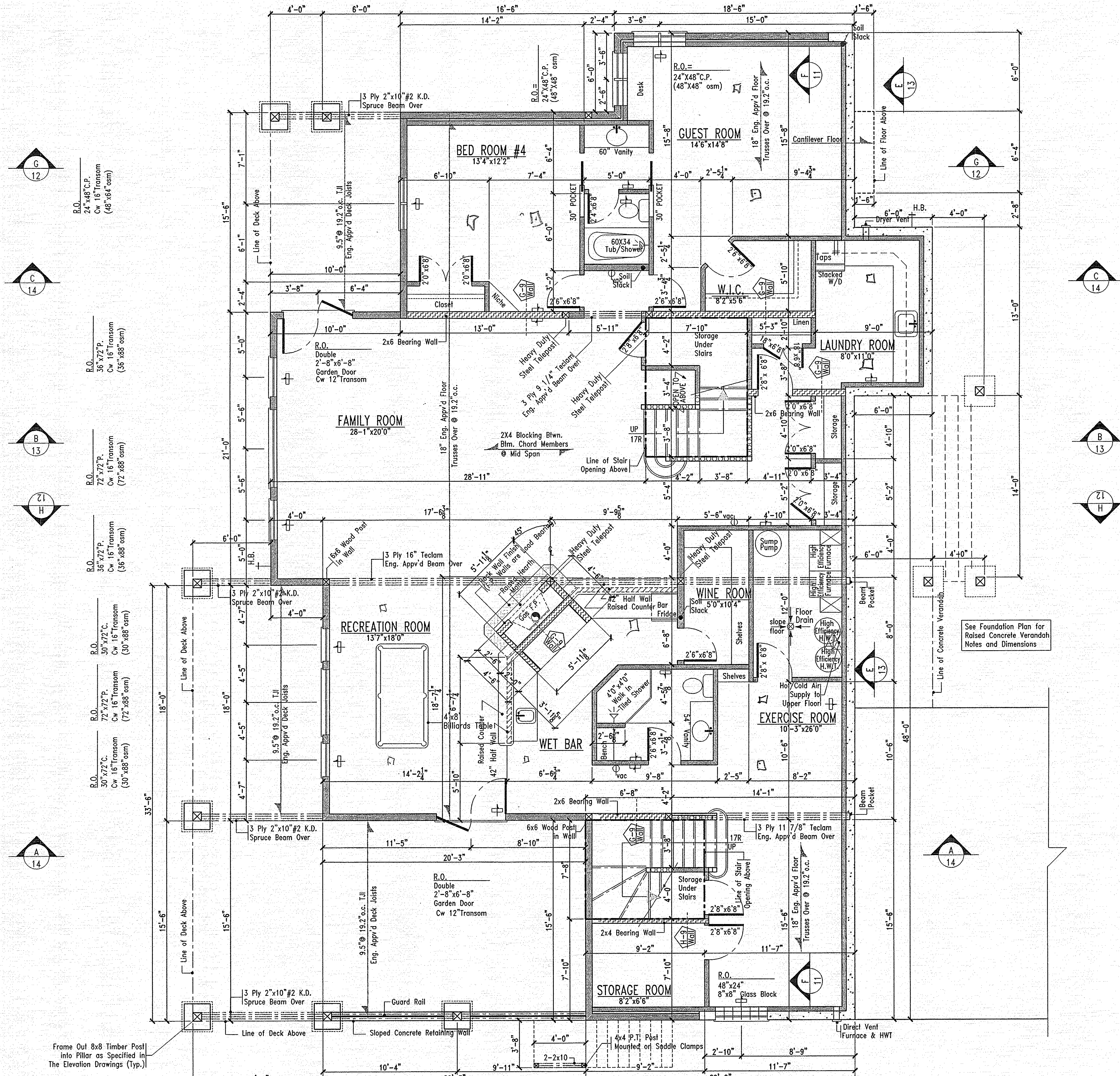


Contractor:



Drawing Symbols Legend

	Floor Drain		Water Taps
	Chimney Flue		Fire Extinguisher
	Cold Air Vent		Soil Stack
	Heat Vent		Vacuffo Sweep
	Hose Bib		Vacuffo Outlet
	Natural Gas		Recessed Medicine Cabinet
			Shower Head Location

DEVELOPED LOWER LEVEL AREA NOTES

Developed Lower Level Area Does Not Include Furnace or Mechanical Rooms, Area Below Stairs, or Any Room Designated Undeveloped or Future Development

WINDOW WELL NOTES

- Provide Window Wells When Windows are Below Finish Grade. Window Must Have a Clearance of Not Less Than 22" (550mm) in Front of the Window - 9.7.1.3 A.B.C.
- Window Wells Must Be Graded Towards a Drain Cored Out of the Ground in Center of Window Well. Fill Core With 3/4" Washed Gravel. Cored Drain to Lead to Weeping Tile For Surface Discharge Away From Home Via Sump Pump (see sump pump detail in cross sections)

VENTILATION

PRINCIPAL EXHAUST
 9.32.3.4 Provide Dedicated Principal Exhaust fan on Central Control Switch. Control switch to include interlock between Principal Exhaust fan & Ventilation supply Air Fan.

SUPPLEMENTAL EXHAUST
 9.32.3.5 All Washrooms Must Have Min. Exhaust Rate of 25 LS
 All Kitchens Must Have Min. Exhaust Rate of 50 LS

FORCED AIR SYSTEMS
 9.32.3.6 Ventilation supply Air to be introduced to System Return Air Plenum

VENTILATION SYSTEMS WITH NON-FORCED AIR SYSTEMS
 9.32.3.7 Dedicated supply Air Fan to Match Principal Exhaust Capacity Requirement.
 • Outdoor Ventilation Air to be Pre-Heated.
 • Duct work system Required to Distribute Ventilation Air to: Each Bed Room, All Principal Living Areas.

INTAKE & EXHAUST OPENINGS
 9.32.3.12 Provisions to Prevent contamination Between Exhaust & Intake openings and External Sources Established.
 • Air Intakes to be Labeled
 • Air Intake & Exhaust outlet Protection Provisions Established.

MOISTURE CONTROL

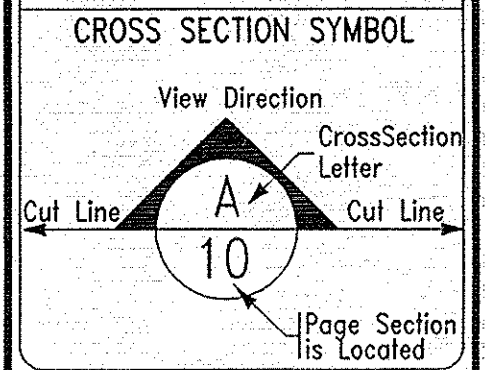
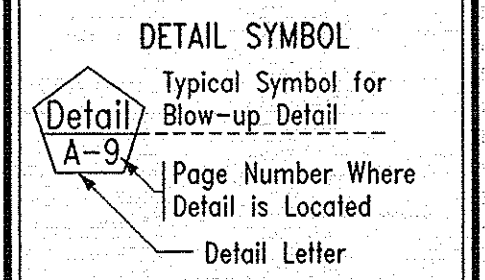
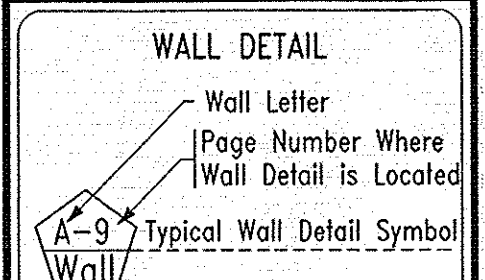
Place a 6 mil Poly Vapor Barrier Between Bottom Plates of Lower Level Walls and Concrete Floor.

LOWER LEVEL WALL TYPES

	2x6 Wall for New home Construction
	2x4 Wall for New home Construction
	Railing
	Half Wall
	2x6 Wall Plates Only (see cross sections)
	2x6 Interior Load Bearing Walls
	Future Wall Development

LOWER LEVEL DEVELOPMENT

2,501 sq. ft.
 (See Legend Notes for Ventilation Requirements)
 Area Excludes Stairs, Storage Room, Hot Tub Area, & Furnace Room.



Stamp:

Notes:

MACK DESIGN CONSULTANTS
 "Designers of Fine Custom Homes"

2808 48 Avenue South
 Lethbridge, Alberta
 T1K-7B3

Phone: 403-329-6106
 Fax: 403-329-3364
 mackarch@telusplanet.net

- Country Style Home Plans
- City Home Plans
- Additions
- Renovations

Design Team
 Project Designer: Jim Mack
 Construction Drawings: Rich Mack
 Preliminary Drawings: Christina Mack

Client: **Hughes**

Scale: 1/4" = 1'-0"

Date: **Oct. 6/06**

Dwg. No. **0-71-6-2s**

Sheet Title: **Lower Floor Level**

Sheet No. **4 of 17**